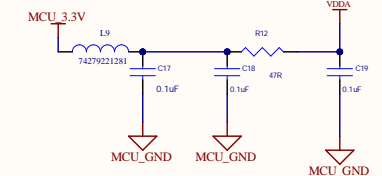
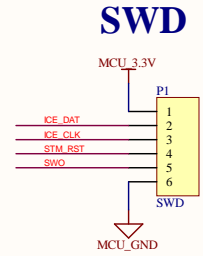
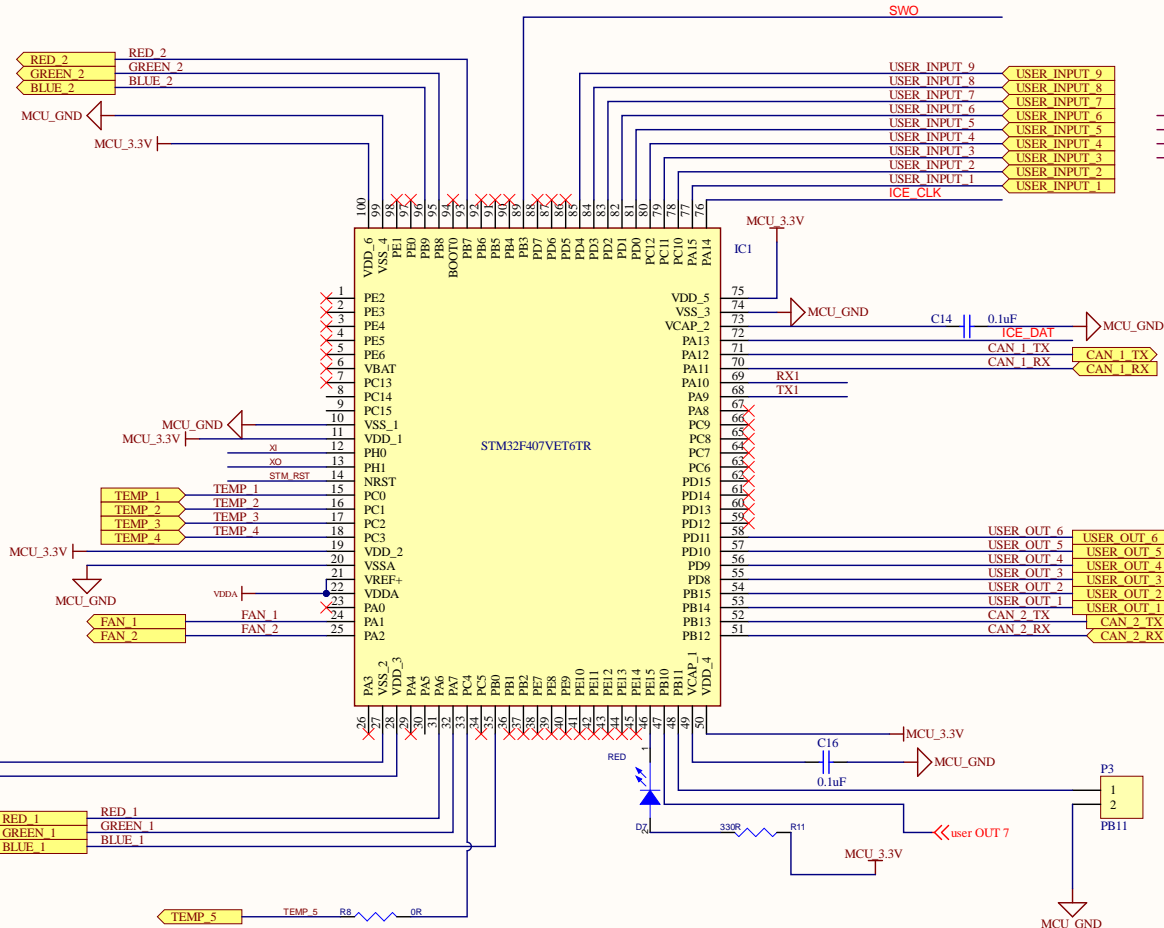
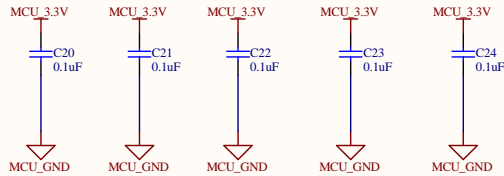
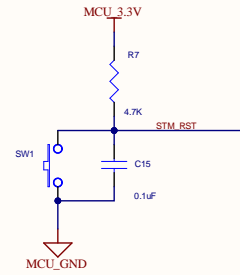
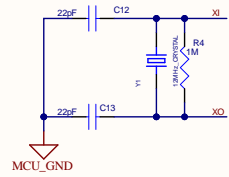


# CRYSTAL\_OSCCILATOR



LUBI INDUSTRIES LLP.

LUBI-EV SOLUTIONS  
LUBI CORPORATE HOUSE, R&D ELECTRONICS

Title: EVSE\_DC\_IO\_R-2.1  
MICRO\_CONTROLLER\_UNIT  
ENGINEER: ABHIRAM TIWARY

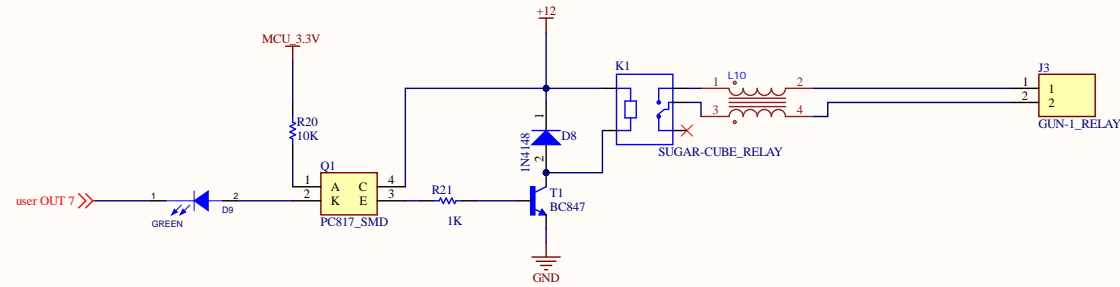
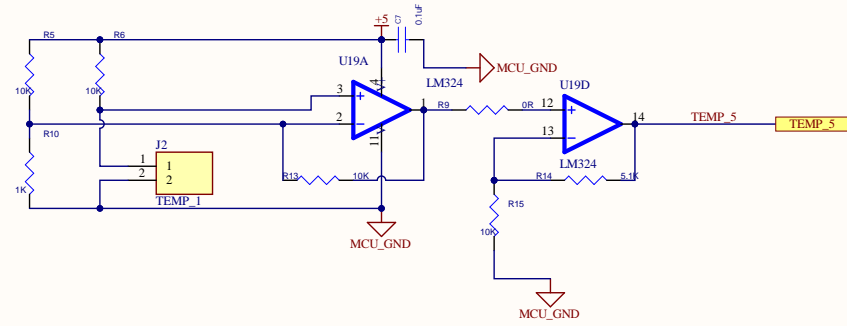
Size: A4  
Document Number: LTD15S1008

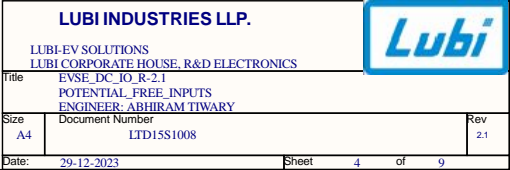
Date: 29-12-2023

Sheet: 2 of 9

Rev: 2.1







A

B

C

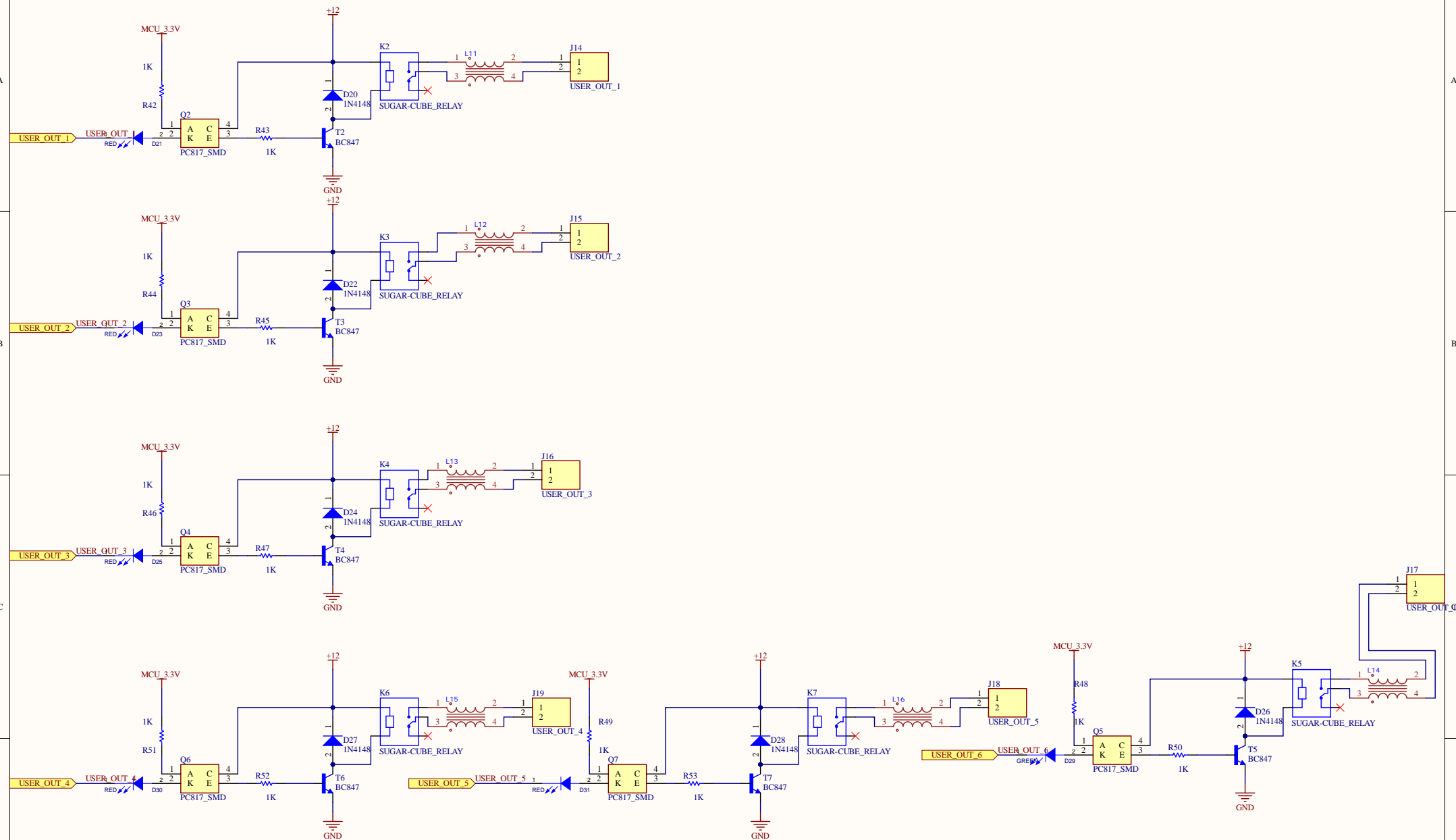
D

A

B

C

D

**LUBI INDUSTRIES LLP.**LUBI-EV SOLUTIONS  
LUBI CORPORATE HOUSE, R&D ELECTRONICSTitle  
EVSE\_DC\_IO\_R-2.1  
POTENTIAL\_FREE\_OUTPUTS  
ENGINEER: ABHIRAM TIWARYSize  
A4  
Document Number  
LTD15S1008

Date: 29-12-2023

Sheet 5 of 9

Rev  
2.1

A

B

C

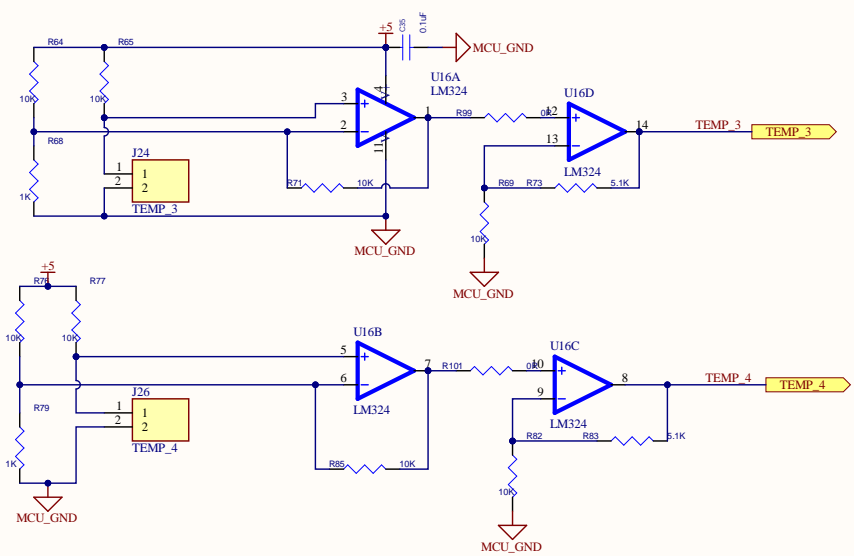
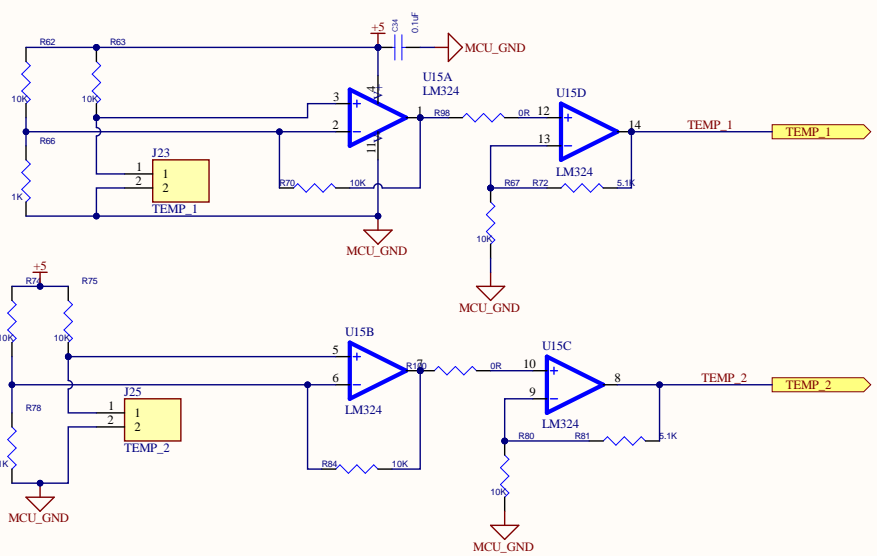
D

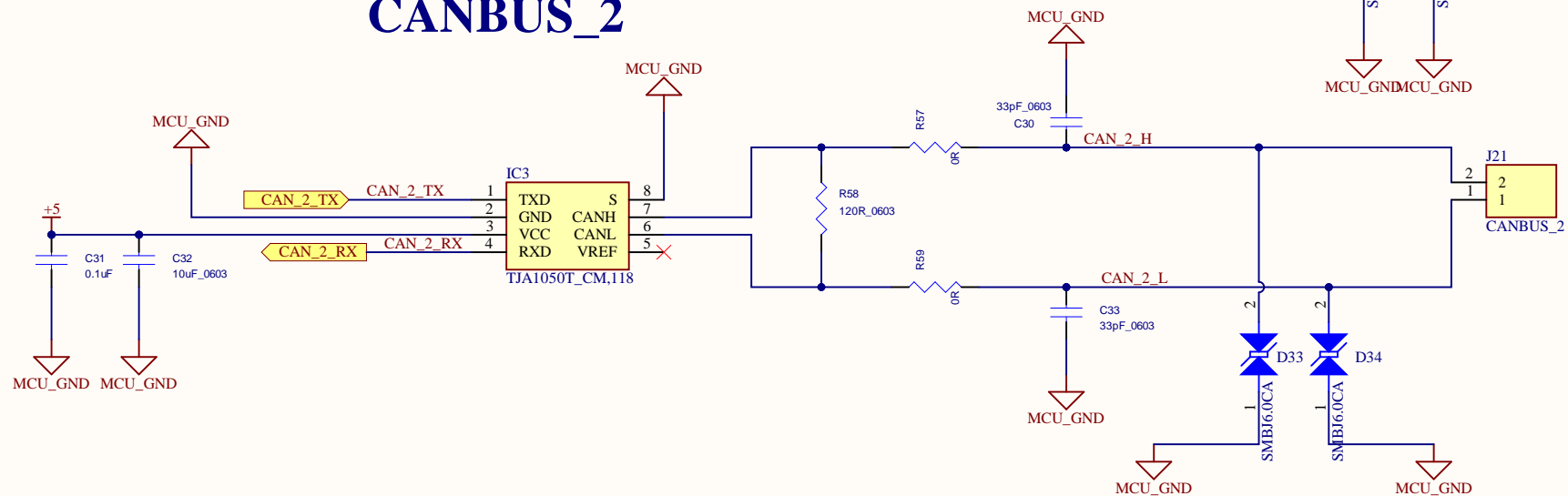
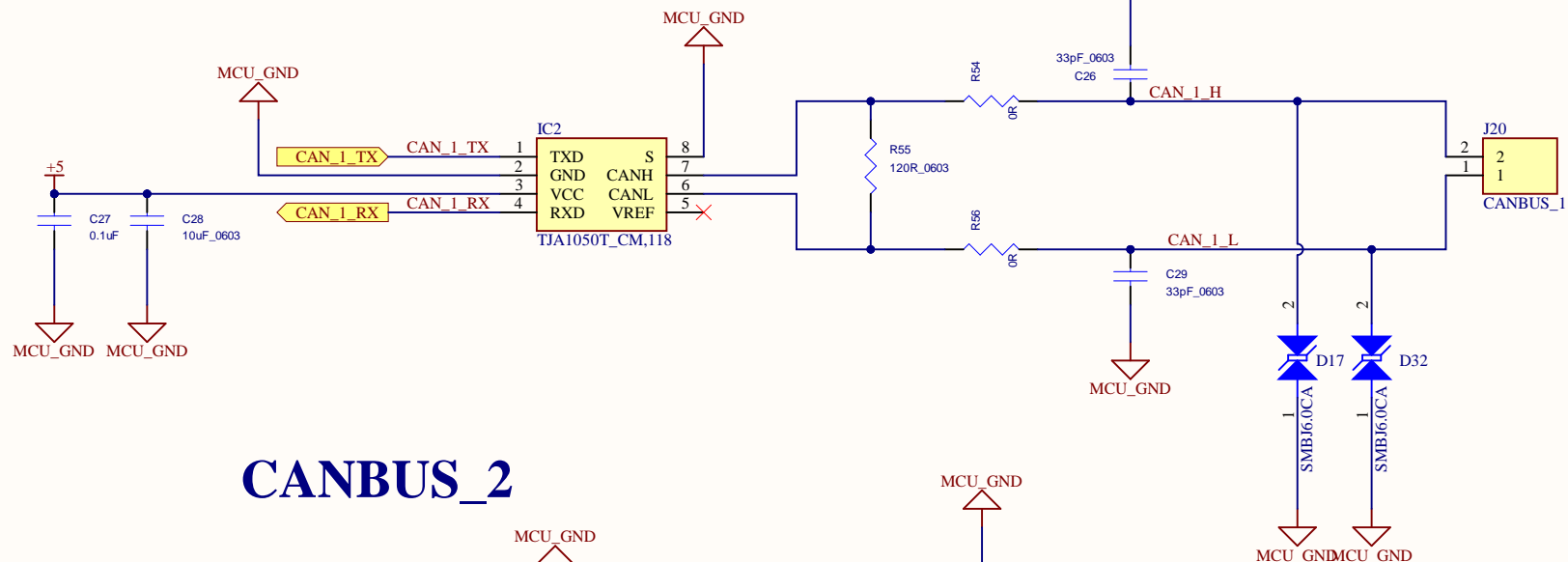
A

B

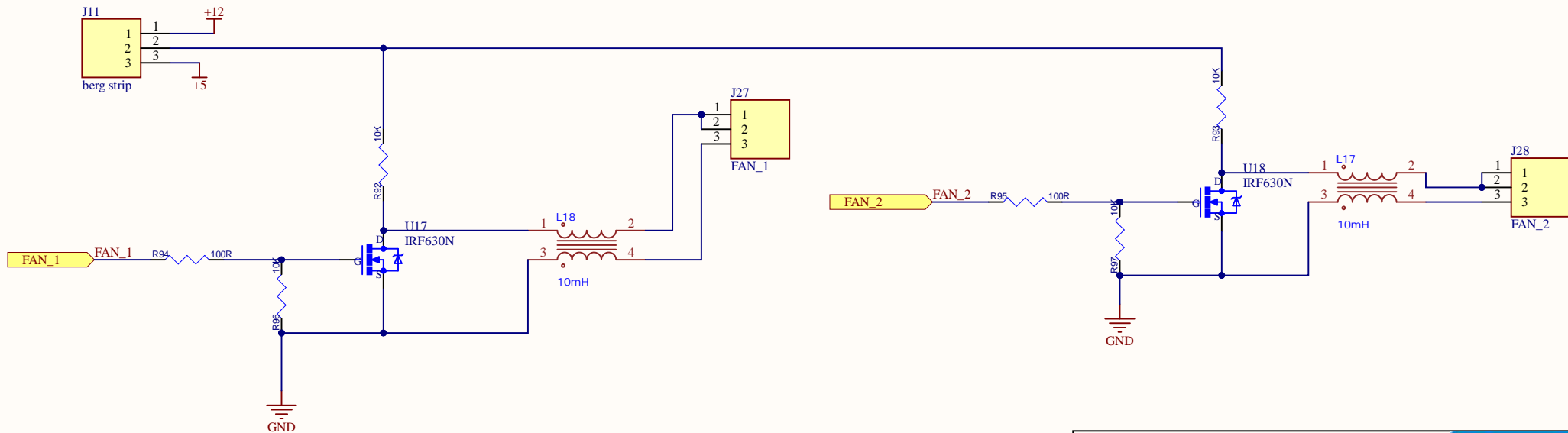
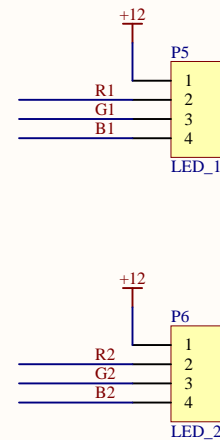
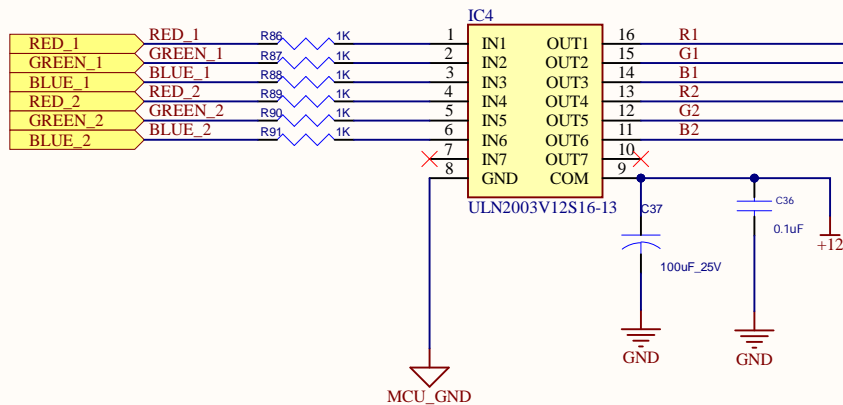
C

D









LUBI INDUSTRIES LLP.		
LUBI-EV SOLUTIONS LUBI CORPORATE HOUSE, R&D ELECTRONICS		
Title	EVSE_DC_IO_R-2.1 PWM CHANNELS ENGINEER: ABHIRAM TIWARY	
Size	Document Number	Rev
A4	LTD15S1008	2.1
Date:	29-12-2023	Sheet 8 of 8



